

MCS400 CalPanel



The MCS400 CalPanel combines the most versatile ECU calibration interface available with powerful data recording capabilities. Virtually any number of signals from any source can be stored into a circular buffer of up to 4 GB size at speeds of 10 MB/s. This circular buffer can be emptied at any time - even while the recording is in progress, to allow data recordings without gaps over very long periods. Retrieval of recorded data over LAN or USB2.0 is at speeds of 300 MB/minute. Smart on-the-fly data processing allows previews of the entire recording to be uploaded in seconds. The recorder is fail-safe even in case of power loss and is auto-resuming when power returns.

Built around the Freescale MPC5200, the MCS400 delivers 760 MIPS (million instructions per second). The on-chip double precision FPU and the proven, robust VxWorks 5.5 RTOS make the platform ideally suited for running Rapid Prototyping applications concurrently to its system tasks.

Rapid Prototyping as Standard. The MCS400 comes integrated with @Source-Lite, a plug-in for the Matlab®/Simulink® toolchain. Just build your model under RTW and @Source-Lite will generate a self-contained Rapid Prototyping Module (RPM) that runs on MCS400, together with the corresponding A2L description file. It takes less than a minute to build models and start live execution.

Simultaneous calibration of elements without PC interaction. Three user-configurable rotary encoders allow simultaneous calibration which is particularly important for Motorsport projects. Several MCS400 CalPanels can be cascaded to increase the number of elements that can be calibrated at a time and even to enable calibration control for more than one operator.

Features:

Technical Data

400 MHz Freescale MPC5200 PowerPC delivering 760 MIPS
on-chip double precision Floating Point Unit, 128 MB RAM
VxWorks Real Time Operating System
Dimensions (in mm): 200L x 200W x 104H.
Temp. range: -40 to +85 °C operating
Power Supply: 4V to 60V, overvoltage- and fault-protected
High Speed 8 GB Flash Drive

Display & Input devices

254x32 high brightness, sun-light readable VFD
3 endless turn rotary encoders with programmable step width

Interfaces

1 x LAN 10/100 Ethernet with Auto-MDI/MDIX crossover
1 x USB2.0
1 x RS-232
2 x CAN 2.0B, max. 1 Mbps

Options

CAN 2.0B Expansion module, (2 additional channels)
Multi Mode Serializer Port (2 channels)
operating modes such as:

- JTAG Master
- RENESAS advanced debug protocols (AUD / H-UDI / RTD)
- Infineon On Chip Debug Support (OCDS)
- I/F to Memory Emulator POD
- I/F to ultra-fast analog Data Acquisition

CAN Functionality and Protocols

ECU Calibration & data acquisition over CCP and XCP (for up to 20 ECUs simultaneously)
ECU Flash programming over CCP and XCP
CAN data acquisition & bus monitoring
CAN bus termination software selectable

MCS400 CalPanel

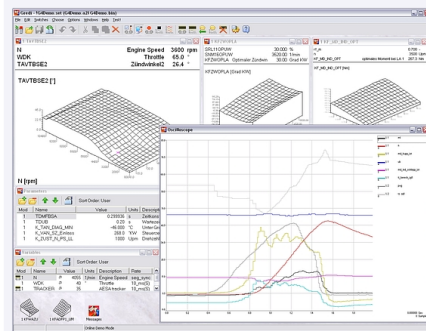
Applications:

Test-bench calibration
Calibration for High Performance racing engines

Key Benefits:

Excellent coarse/fine tuning by use of endless turn rotary encoders
Calibration does not need any interaction with PC user interface
Units can be cascaded to even allow control for more than one operator
Transparent, state-less operation
Easy to configure. Configuration is saved with project settings.
Competitive price

User Front End:



Gredi V4

All-in-one. All major functions required by an application engineer are integrated into a single intuitive framework:

- Numeric and graphic calibration of ECU maps and parameters
- display, recording and evaluation of simultaneously acquired ECU internal and process data
- transfer, comparison and documentation of calibration data (changes)
- flashing of ECU program and data memory
- monitoring of ECU communication

Ordering Information:

MCS400-CP	CalPanel	
MCS400-EXP-MMSP	MMSP	Expansion module (2 channels Multi-Mode Serializer Port)
MCS400-EXP-CAN2	CAN 2.0B	Expansion module (2 channels)

Advance product information. Kleinknecht Automotive reserves the right to modify this product without notice.

Contact:

www.kleinknecht.com

Kleinknecht Automotive GmbH
Sauerlacher Strasse 25 b
D-82515 Wolfratshausen
Germany

Telephone: +49 (0) 8171.998.76 -0
Facsimile: +49 (0) 8171.998.76 -9
info@kleinknecht.com

Kleinknecht Automotive
Industry and Trade center bldg.
2 Yamashita-cho, Nakaku, Yokohama-shi,
Kanagawa-ken 231-0023, Japan

Telephone: +81 (0) 45.640.0036
Facsimile: +81 (0) 45.662.7190
info.jp@kleinknecht.com

クラインクネヒト オートモーティブ
〒231-0023 横浜市中区山下町二番地
産業貿易センタービル

